

Questions?

US, Canada, Asia Pacific, & Latin America
www.wizards.com/customerservice

Wizards of the Coast LLC
P.O. Box 707
Renton, WA 98057-0707
USA

Tel: 1-800-324-6496 (within the U.S. and Canada)
or 1-425-204-8069

UK, Eire, & South Africa

Wizards of the Coast LLC, c/o Hasbro UK Ltd.
P.O. Box 43
Newport NP19 4YD
UK

Tel: + 08457 125599

Email: wizards@hasbro.co.uk

All Other European Countries

Wizards of the Coast p/a Hasbro Belgium NV/SA
Industrialaan 1
1702 Groot-Bijgaarden
BELGIUM

Tel: +32.70.233.277

Email: custserv@hasbro.be

Please retain company details for future reference.

Check us out on the web:
Axisandallies.com



©2013 Wizards of the Coast LLC, P.O. Box 707, Renton, WA 98057-0707, USA. Manufactured by: Hasbro SA, Route de Courroux 6, 2800 Delemont, CH. Represented by: Hasbro Europe, 2 Roundwood Ave, Stockley Park, Uxbridge, Middlesex, UB11 1AZ, UK. The Wizards of the Coast logo is a trademark of Wizards of the Coast LLC in the USA and other countries. Avalon Hill, Hasbro, Axis & Allies, and their logos are trademarks of HASBRO, Inc. and are used with permission. © denotes Reg. U.S. Pat. & TM Office. All rights reserved. ©2013 Hasbro. Color of parts may vary from those pictured. For Europe: Hasbro UK Ltd, P.O. Box 43, Newport, NP19 4YD, UK. **MADE IN CHINA.**

300A1923000001 EN



Axis & Allies

A Compendium of Tactics and Principal Operations.

AGE 12+
2-8 PLAYERS

Axis & Allies

WWI 1914



DESIGNER'S NOTES

This is not World War II. Progress is/was measured by yards, not miles. The Italians were on the Allies side. Turkey, then at the center of the Ottoman Empire, was one of the members of what was known as the Central Powers. Imperial Germany and the Austro-Hungarian Empire were the two other main Central Powers. The major Allies, sometimes referred to as the Entente, but which I prefer to simply call the Allies, consisted of the British Empire, France, Italy, the United States, and Imperial Russia. There were other historical members of the alliance, but they more or less fell under the command and control of one of these great powers. Had General Pershing not insisted that its integrity be maintained, even the American army would have found itself as simply being replacements for French and British.

I'm a World War II buff...always have been and always will be. World War I was something that was somehow not as interesting or exciting as World War II. It was, if anything, only the prelude to the "real" war that followed some 20 short years later. Other than rumors of my mother's father – so he'd be my grandfather – being gassed while "over there", I had no real personal attachments to the war. It seemed to me that all the main historical characters walked around with swords and feathers on their really fancy hats and helmets. The political relationships between the various countries seemed confusing and complicated. The idea of trench warfare was interesting, but frankly it seemed that the commanders must simply have been inept and lacking any imagination on how to conduct a war. It seemed that the entire thing was conducted by lesser men than could be found during the Second World War. Later, as I became more informed, I developed a new appreciation and better understanding of what this war was really about and why it happened as it did. I became intrigued by the strength of the demonstrated human spirit that manifested itself on the many battlefields of this war that was to be called "the war to end all wars".

I communicate to others by way of games – it's what I do. My task was to design a game that captured the magnitude and feel of this unique struggle. It was with that in mind that I designed this game. We are indeed high up in the air looking down. The words "gas attack" or "trench foot" are nowhere to be found in the rules. Such specific details had to be passed over if the greater aspects of the war were to be incorporated into the game. The core unit types in this game are infantry and artillery units. Tanks and aircraft, new to war, are also represented, but in a reduced way when compared to other *Axis & Allies* games. As I became more aware of the history of this war, it became clear to me that it was above all else a war of infantry and artillery – thousands of infantry and artillery. I leave it to you to imagine the use of poison gases and cavalry units that eventually had to get off their horses and man the trenches, the primitive form of aerial bombardment made by Zeppelins, and even the impact of machine guns that killed by the thousands. They are all there, but you can't see them from your vantage point. You don't have to in order to understand this tragedy of human history.

I've visited many of the battlefields of Europe. Although all of them were fascinating in their ways, the two that linger in my mind are the beaches of Normandy where the D-Day invasion occurred in World War II and the World War I battlefield of Verdun. Normandy conjures up thoughts of bravery and the triumph over tyranny. It was the opening of the door that eventually led to the liberation of Europe. My memories of my

visit are those of a beautiful coastline that quickly becomes the most beautiful collection of rolling hills and lush farm lands. Just off the coast is the American cemetery. As tragic as it is to see some 10,000 graves, it remains somehow possible to walk among the perfectly aligned tombstones and still be able to assign colors and even light to the memories of the visit. You can't help but to be proud of your country and the soldiers, sailors, and airmen that made the ultimate sacrifice on this very spot. They lift you up - and being lifted up in this way feels good.

Verdun is different. It's dark and dreary. No positive emotions are derived from this place. It was part of a meat grinder that eliminated a generation of European youth. This battle alone entailed the deaths of almost a million, primarily French and German, soldiers. Meat grinder? What else could you call something or some place that experienced 40 million exploding artillery shells that churned up the earth and continues to scar it until this day, almost a hundred years later. That's when it dawns on you. Verdun, as large a battle as it was, is but one of many World War I battlefields throughout Europe, Africa, and the Middle-East. To mention but one other, I suggest you read up on The Battle of the Somme, where the British army alone suffered 60,000 casualties in one day. These were places where men found themselves exposed to the full impact of monstrous machines of war which no one, especially the generals, understood. The world was out of whack. The weapons of modern warfare were being introduced during each passing day. All too often, new and frighteningly efficient ways of killing were finding their way to the battlefields, but standard military strategy and tactics couldn't keep up with the new technologies. This resulted in staggering casualty counts on both sides.

It is my hope that while playing this game you develop a better idea and insight into this particularly nasty war. I hope it helps you better grasp the amazing range and scope of the nations, the alliances, and the problems experienced by commanders of the time. I hope you get a feel for what it must have been like to move hundreds of thousands of troops into vital strategic locations only to again move hundreds of thousands more into the same contested battlefield to replace the staggering number of casualties.

While playing this game you will quickly realize that this is not World War II. There are no massive sweeps across continents with blitzing armored divisions and aircraft. Instead, there is a series of determined offensives resisted by equally determined armies dedicated to holding the line. You will find that your depleting resources of men and artillery must be deployed with great thought and efficiency. You will be fighting pretty much the way man has been fighting with each other for thousands of years... only this time the ability to kill your enemy, and for him to kill you, has become intolerably efficient. If you want to better understand World War II, you have to totally understand the war that set the stage for it. I love this game. I like the way it plays.

For a game that has no sweeping conquest of vast territories, it sure moves fast and easy. It helped me to better understand what so many went through during what seems a short hundred years ago.

—Larry Harris



TABLE OF CONTENTS

Game Components	4
How the War Is Won	6
The Combatants	6
Setup	7
Spaces on the Gameboard	10
The Political Situation	12
Order of Play	13
Phase 1: Purchase Units	14
Phase 2: Movement	15
Phase 3: Conduct Combat	17
Land Combat	18
Sea Combat	20
Amphibious Assault and Reinforcement Combat	21
Phase 4: Mobilize New Units	23
Phase 5: Collect Income	23
Winning the Game	23

☆-----☆

CREDITS

Game Design	Larry Harris
Game Development	Larry Harris, Kevin Chapman, Mons Johnson
Editing	Kevin Chapman,
Art Direction	Ryan Sansaver
Cover Illustration	Jim Butcher
Graphic Design	Christopher Brittain, Nick Issac, Nick Bartloetti
3D Artist	Nick Issac, Nick Bartloetti
Graphic Production Specialist	Brian Dumas
Brand Management	Nathan Stewart, Liz Schuh, Laura Tommervik, Shelly Mazzanoble, Hilary Ross, Chris Lindsay
Production Management	Godot Gutierre
Project Management	Maryam Jaddoo
Playtesting	Kevin Chapman, Melanie Chapman, Randy Heath, Bruce Bailen, Michael Lassins, Nate Saveriano, Courtenay Moore

Thanks to all our project team members and the many others too numerous to mention who have contributed to this project.

GAME COMPONENTS

Game Board:

2 game boards

Game Charts/Aids and Storage Boxes:

8 National Storage Boxes

1 General Storage Box

1 Battle Board

Rulebook

Plastic Miniatures: 400 total (50 for each of the 8 powers):

96 Infantry

32 Battleships

80 Artillery

48 Cruisers

32 Tanks

32 Submarines

32 Fighters

48 Transports

Plastic Chips and Dice

60 Light Red Chips

20 Dark Red Chips

60 Light Blue Chips

20 Dark Blue Chips

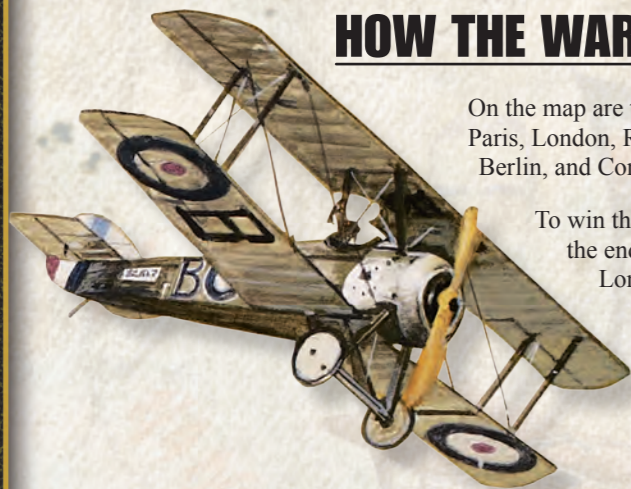
36 Dice

Markers and Tokens

120 National Control Markers

(15 for Each Power)





HOW THE WAR IS WON

On the map are the capitals of the eight major powers. The Allies' capitals are Moscow, Paris, London, Rome, and Washington, DC. The Central Powers' capitals are Vienna, Berlin, and Constantinople.

To win the game, an alliance must capture two enemy capitals and hold them until the end of a round of play. One of the captured Allied capitals must be either London or Paris. One of the captured Central Powers capitals must be Berlin.

THE COMBATANTS

Up to eight people can play *Axis & Allies: 1914*. One or more players take the side of the Central Powers (Germany, Austria-Hungary, and the Ottoman Empire), and one or more play the Allies (the Russian Empire, France, the British Empire, Italy, and the United States). Note: The British Empire is considered to include all the Commonwealth countries that participated in the war.

On your turn, you build, deploy, maneuver, and command army corps and naval fleets. On your opponents' turns, they will bring their forces against you. The more territories you hold, the more income you generate and the more units you can mobilize—and the more powerful you become.

If fewer than eight people play, some will control more than one power. If a player controls more than one power, those powers must all be on the same side (Central Powers or Allies). If you control more than one power, keep track of those powers' income and units separately. You can conduct operations for only one power at a time. If there are less than eight players, split control of the powers between them as follows:

Two Players

Player 1: Central Powers
Player 2: Allied powers.

Three players

Player 1: Central Powers
Player 2: Russian Empire, Italy, United States
Player 3: France, British Empire

Four players

Player 1: Austria-Hungary, Ottoman Empire
Player 2: Germany
Player 3: Russian Empire, Italy, United States
Player 4: France, British Empire

Five players

Player 1: Austria-Hungary, Ottoman Empire
Player 2: Germany
Player 3: Russian Empire, United States
Player 4: France, Italy
Player 5: British Empire

Six players

Player 1: Austria-Hungary
Player 2: Germany
Player 3: Ottoman Empire
Player 4: Russian Empire, United States
Player 5: France, Italy
Player 6: British Empire

Seven players

Player 1: Austria-Hungary
Player 2: Germany
Player 3: Ottoman Empire
Player 4: Russian Empire, United States
Player 5: France
Player 6: British Empire
Player 7: Italy

SETUP

Once you have decided who will play which power(s), set up the game for play. It contains the following components.

Game Board

The game board is a map of the world extending from Bombay in India to Washington, DC in the United States, circa 1914. It is divided into a number of spaces, either territories (on land) or sea zones, separated by border lines.

Setup Charts

Take the setup chart for your power, located on the box top of its storage tray. It shows the name of the power, its units' color, its emblem, and the side it's on. It also lists the starting numbers and locations of that power's units on the game board.

Austria-Hungary Setup: 26 IPCs	
Vienna: 12 Infantry, 2 Artillery	
Bohemia: 6 Infantry, 2 Artillery	
Tyrolia: 6 Infantry, 2 Artillery	
Trieste: 6 Infantry, 2 Artillery	
Budapest: 12 Infantry, 2 Artillery	
Galicía: 6 Infantry, 2 Artillery	
Sea Zone 18: 1 Battleship, 1 Cruiser, 1 Transport	

British Empire Setup: 30 IPCs	
London: 6 Infantry, 2 Artillery	Sea Zone 2: 1 Cruiser, 1 Transport
Wales: 4 Infantry, 1 Artillery	Sea Zone 9: 1 Battleship, 2 Cruisers, 1 Transport
Yorkshire: 1 Infantry	
Scotland: 1 Infantry	Sea Zone 19: 1 Cruiser, 1 Transport
Canada: 6 Infantry, 2 Artillery	Sea Zone 29: 1 Battleship, 1 Cruiser, 1 Transport
India: 6 Infantry, 2 Artillery	
Egypt: 6 Infantry, 2 Artillery	
Anglo-Egyptian Sudan: 1 Infantry	
British East Africa: 1 Infantry	
Rhodesia: 1 Infantry	
Union of South Africa: 1 Infantry, 1 Artillery	

Russian Empire Setup: 25 IPCs	
Finland: 1 Infantry	
Karelia: 1 Infantry	
Livonia: 3 Infantry, 2 Artillery	
Poland: 6 Infantry, 2 Artillery	
Belarus: 6 Infantry, 2 Artillery	
Moscow: 6 Infantry, 2 Artillery	
Ukraine: 6 Infantry, 2 Artillery	
Tatarstan: 3 Infantry, 1 Artillery	
Sevastopol: 3 Infantry, 2 Artillery	
Kazakhstan: 1 Infantry	
Sea Zone 12: 1 Battleship	
Sea Zone 21: 2 Cruisers	

Ottoman Empire Setup: 16 IPCs	
Constantinople: 6 Infantry, 2 Artillery	
Smyrna: 6 Infantry, 1 Artillery	
Ankara: 6 Infantry, 1 Artillery	
Mesopotamia: 2 Infantry, 1 Artillery	
Syrian Desert: 1 Infantry	
Trans-Jordan: 2 Infantry, 1 Artillery	
Sea Zone 20: 2 Cruisers	

Germany Setup: 35 IPCs	
Berlin: 13 Infantry, 3 Artillery, 1 Fighter	South West Africa: 1 Infantry, 1 Artillery
Kiel: 3 Infantry, 4 Artillery	Sea Zone 5: 2 Submarines
Ruhr: 7 Infantry, 3 Artillery	Sea Zone 7: 2 Submarines
Alsace: 7 Infantry, 3 Artillery	Sea Zone 10: 1 Battleship, 2 Cruisers
Munich: 11 Infantry, 3 Artillery	
Hanover: 6 Infantry	
Silesia: 6 Infantry, 3 Artillery	
Prussia: 6 Infantry, 3 Artillery	
Togoland: 1 Infantry	
Kamerun: 1 Infantry	
German East Africa: 1 Infantry	

Italy Setup: 14 IPCs	
Piedmont: 6 Infantry, 2 Artillery	
Venice: 6 Infantry, 2 Artillery	
Tuscany: 1 Infantry	
Rome: 6 Infantry, 2 Artillery	
Naples: 1 Infantry	
Libya: 1 Infantry, 1 Artillery	
Somaliland: 1 Infantry	
Sea Zone 17: 1 Battleship, 1 Cruiser, 1 Transport	

France Setup: 24 IPCs	
Paris: 6 Infantry, 2 Artillery, 1 Fighter	
Picardy: 6 Infantry, 2 Artillery	
Brest: 1 Infantry	
Bordeaux: 1 Infantry	
Burgundy: 6 Infantry, 2 Artillery	
Lorraine: 6 Infantry, 2 Artillery	
Morocco: 1 Infantry	
Algeria: 1 Infantry	
Tunisia: 1 Infantry	
French West Africa: 1 Infantry	
Sea Zone 15: 1 Battleship, 1 Transport	
Sea Zone 16: 1 Battleship, 1 Cruiser, 2 Transports	

United States Setup: 20 IPCs	
United States of America: 6 Infantry, 2 Artillery	
Sea Zone 1: 1 Battleship, 1 Cruiser	

SETUP

Combat Forces

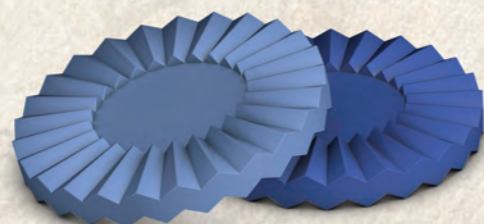
Take the plastic miniatures that represent your power's combat units. Each power is color-coded as shown in the following table, which also shows the power's starting income level and treasury in Industrial Production Credits (see page 9). Place all of your power's starting units on the game board as listed on your power's setup chart.

Power	Starting Income	Color	Power	Starting Income	Color
Austria/Hungary	26	Green	British Empire	30	Light Green
Imperial Russia	25	Maroon	Ottoman Empire	16	Dark Teal
Imperial Germany	35	Dark Grey	Italy	14	Brown
France	24	Dark Blue	United States	20	Dark Green

Plastic Chips

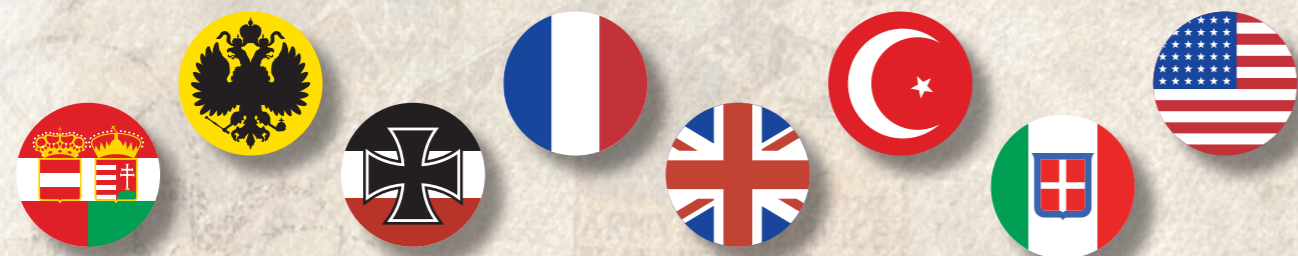
Use the chips to save space in overcrowded territories and sea zones. There are two basic colors – red for the Central Powers and blue for the Allies. Light colored chips, whether red or blue, represent one combat unit each, and dark colored chips represent five units each. If Germany, part of the Central Powers, wanted to place seven infantry on a space, it would stack one dark red chip for 5, one light red chip for 1, and place a German infantry on top of the two chips. The number of stacks is not limited by the number of plastic pieces available. If you do not have enough pieces to top off all of your stacks, use any agreed-upon method for identifying them.

If you run out of your side's plastic chips, you can temporarily use your opponents' chips. For good order, you should replace the borrowed chips as soon as yours become available. It is important, however, that you always have your colored chips showing at the top of a stack of chips.



National Control Markers

National Control Markers (NCMs) are used to indicate status in the game. They mark conquered territories and indicate national production levels. Take all of the national control markers that belong to your power (printed with its emblem).



SETUP (continued)

National Production Chart

This chart tracks each power's national production level (income) during the game. It is located on the game board, specifically on the Sahara Desert in Africa. The national production level is based on the combined Industrial Production Credit (IPC) values of all of the territories a power controls. As territories are won and lost, the production levels are updated with the back and forth movement of National Control Markers on the chart. At the beginning of the game each power's player should place his or her NCMs on the chart showing their power's starting national production level, as indicated in the table on page 8. There are two rows of numbers on the chart. The top row, numbered from "10" to "70", is where a power will place its NCM indicating how many tens of IPCs it earns per turn. Germany, for example, would place its NCM on the "30". This represents three tens, or thirty. The bottom row, numbered "1" to "9", is for tracking the ones. Again, using Germany as an example, it would place a second NCM on the "5". With an NCM on the "30" of the top row, and a second NCM on the "5" of the bottom row, we can conclude that Germany is making 35 IPCs per turn. Each player should keep track of his or her power's production level separately.



Industrial Production Credits

Industrial Production Credits (IPCs) are the money of the game, representing capacity for military production. Each power has a beginning national production level, shown as Starting Income on the table on page 8. Each power also begins the game with that many IPCs in its treasury to spend on its first turn. During the game, each power will spend IPCs on new units and collect more IPCs as income from territories that it controls. Have one player act as a banker and track each power's current IPC treasury on a piece of paper, or use another means agreed upon by your group. A power can't lend or give IPCs to another power, even if both powers are on the same side.

Mobilization Zone

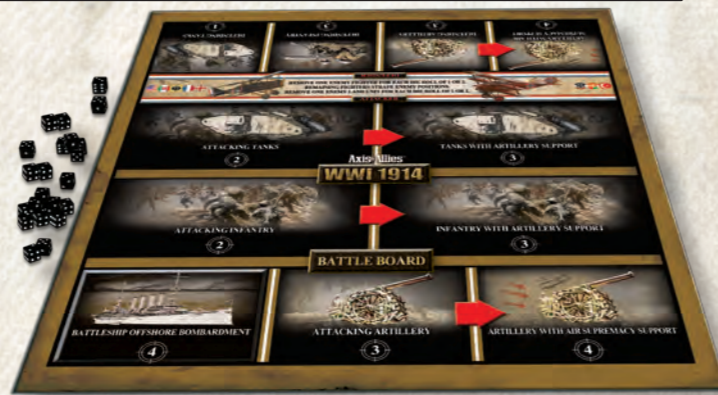
The Mobilization Zone, located on the game board next to the National Production Chart, includes a chart that shows each unit's cost in IPCs. Newly purchased units are placed here until they are mobilized.



SETUP (continued)

Battle Board and Dice

The battle board and dice are used to resolve combat in contested spaces.



SPACES ON THE GAMEBOARD

Units can move between adjacent spaces (those that share a common border). Spaces that meet only at a point (such as London and sea zone 8) are not adjacent to one another, as they do not share a common border.

Territories

Each major power's original territories have their own color and the power's national emblem. Taking a look at Germany on the map, we notice that all the German territories share the same dark color and national emblem. Capital territories have a larger version of the power's national emblem and have their names in red along with a red box. The territory named "Berlin" (in red), having the large Imperial German emblem on it, is the power's capital territory. Almost all of the major powers have both capital and regional territories (the United States being the exception). A few of the powers, such as the British Empire, have colony territories throughout the map. The British Empire controls territories in Canada, Africa, and the Middle East.



SPACES ON THE GAME BOARD (continued)

Regional territories, together with the capital, make up the entire country of a major power. With Berlin being the German capital, the German regional territories are Ruhr, Alsace, Kiel, Hanover, Munich, Prussia, and Silesia. Regional territories are adjacent to one another and can trace a line across adjacent territories directly to their capital territory. Germany also has four colonies: Togoland, Kamerun, South West Africa, and German East Africa. Colonies are not adjacent to regional territories or the capital.

On the map are also several minor powers, which are not controlled by players. Like major powers, each has its own dedicated national emblem and a capital territory indicated by its larger emblem (see Portugal, Bulgaria, or Sweden). Unlike major powers, the names of minor powers' capital territories are not red. Most minor powers do not have regional territories or colonies. Belgium, Portugal, and Spain, with their African colonies, are the three exceptions.

Most minor powers are neutral and are green/white in color, but some are politically aligned with major powers (see "The Political Situation", page 12). In addition to their own national emblem, aligned minor powers also have a smaller national emblem indicating which major power they're aligned with and are the same color as the territories of that power. Bulgaria and Romania are examples of minor aligned powers. Bulgaria is aligned with the Central powers. We know this by its color and the presence of the small Ottoman Empire emblem located on the Bulgarian territory. Romania, with its light brown color and small Imperial Russia emblem, is aligned with the Allies.

Most territories have an income value ranging from 1 to 8 printed on them, with the United States having the exceptionally high income value of 20 for its only represented territory on the map. This is the number of IPCs they produce each turn for their controller. A few territories, such as Corsica, have no IPC value.

All territories exist in one of four conditions:

Friendly: Controlled by you or a friendly power, or an unmobilized minor aligned power on your side (see "The Political Situation", page 12)

Hostile: Controlled by an enemy power, or an unmobilized minor aligned power on the other side

Contested: Not controlled by any power, and occupied by units of one or more powers on each side

Neutral: Not controlled by any power and not aligned with either side

Sea Zones

Sea zones are either friendly or hostile. Friendly sea zones contain no surface warships (this doesn't include submarines and transports) belonging to an enemy power. Hostile sea zones contain surface warships belonging to an enemy power.



Some sea zones contain naval base symbols. Each of these sea zones shares its naval base symbol with an adjacent territory. These sea zones allow the power that controls the corresponding territory to mobilize new sea units (original territories only) and repair its battleships.

Islands

An island is a single territory surrounded entirely by one or more sea zones. A sea zone can contain more than one island, but each is considered one territory with its own name and national emblem. Islands that have no name label, such as the ones in sea zone 2, are not game spaces and may not have units move onto them.

The Suez Canal

The Suez Canal connects the Mediterranean Sea (sea zone 19) to the Indian Ocean (sea zone 28). The canal is located inside the territory of Egypt, so no land or air movement is required to cross the canal within Egypt, and land units and fighters can move freely between Egypt and Trans-Jordan.

If you want to move sea units through the canal, your side (but not necessarily your power) must control Egypt.

THE POLITICAL SITUATION

Minor powers, whether neutral or aligned (see “Territories”, page 10), begin the game unmobilized, which is to say not involved in the war. As the game progresses, these powers may become involved in the war, either through mobilization by a friendly major power or invasion by an unfriendly one.

The Austria-Hungary player, going first, is required to attack Serbia during his or her opening turn, and in effect begin the Great War. This involves moving land units into Serbia.

Mobilizing A Minor Power

As you will immediately notice, Serbia has no standing army to defend itself. Only major powers have standing armies on the map at the beginning of the game. When a major power’s forces are moved into a minor power’s capital territory one of two events occurs. The minor power either mobilizes to join the entering forces, or it mobilizes to resist the invasion. The reaction depends on the political relationship between the major and minor powers.

The number of units that a minor power mobilizes is twice the IPC value of the capital territory. One of these units will be an artillery, and the rest will be infantry. Serbia is worth two IPCs, so three infantry and one artillery are placed there. The nationality of the placed units depends on the political status of the minor power (see below). A minor power can only be mobilized once during the game.

Important Note: Mobilization is only conducted for minor powers’ capitals the first time they are entered into by land units of a major power. To emphasize this point, let’s take a look at the following: A small German force is moved into Belgian Congo from German East Africa. The first thing that should be recognized is that the territory “Belgian Congo” is not a minor power. It does not have a large national emblem. It has a small Belgium emblem. This indicates that territory is simply a Belgian colony, so no units are mobilized in it.

All mobilization must be done at the end of the movement phase, after all movements have been completed. The only exception is if a minor power is being mobilized as a result of an amphibious assault or reinforcement (see “Amphibious Assault and Reinforcement Movement”, page 17) that involves a sea battle. In this case, the mobilization is done immediately before the moving land units are offloaded into the territory.

Mobilizing a Minor Aligned Power

When the capital of a minor aligned power is entered by land units of a major power, whether friendly or enemy, the minor power’s forces are represented by pieces of the major power with which it’s aligned. In the opening move, Austria-Hungary and Serbia belong to opposing alliances. Serbia’s allegiance is indicated by the Imperial Russian Eagle emblem located in the territory. This small Russian national emblem indicates that Serbia has a military alliance with Russia. Serbia will be resisting the Austria/Hungarian invasion. Russian pieces will be used to represent the newly mobilized Serbian forces.

Mobilizing a Minor Neutral Power

If a major power moves units into a minor neutral power’s capital territory, the invaded neutral power will mobilize forces against the invading force. Serious consideration should be given to which power will represent the mobilized forces. It can be any of the powers that are on the opposite side from the power that is performing the invasion. For example if Germany (Central Powers member) invaded Holland, one of the Allied players would place his or her infantry and artillery. It should also be noted that if Holland ends up being controlled by the Allies, the ally who originally mobilized in Holland would most likely gain Holland’s 2 IPCs if the territory ends up in his or her control. The players in the defending alliance should decide which of them should represent the Dutch mobilization in Holland and in effect control Holland. If the alliance cannot come to an agreement about who will represent defending forces, then the attacker will make the decision for them.

The neutrality of a territory can only be violated once. Once violated, it is either controlled by one side or the other or contested from then on.

United States Isolationism

The United States begins the game neutral, but with Allied sympathies. While it remains neutral, the United States may not move land or air units into Central Powers-controlled or contested territories or attack Central Powers sea units. It will not enter the war unless either its units are attacked by the Central Powers or it loses income to a German submarine attack (see “Collect Income”, page 23). However, if it is not yet at war at the beginning of its fourth turn, the United States will enter the war at that time.

THE POLITICAL SITUATION (continued)

Optional Rule-The Russian Revolution

Russia, already under great social and economic stress, may incur such desperate conditions that a Bolshevik revolution ignites. The revolution will occur at the end any Russian turn starting in round four if Russia is losing the war. Russia will be considered to be losing the war if all of the following conditions are met:

- **Three or more territories adjacent to Moscow are controlled by the Central Powers.**
- **At least one other original Russian territory is controlled by the Central Powers or contested.**
- **Moscow is controlled by Russia or contested.**

If the revolution occurs, the Imperial government is replaced with a republic. As a consequence of this, an armistice will be signed with the Central Powers, effectively removing Russia from the war, and the game. All Russian units outside of original Russian territories or Russian-controlled territories are immediately removed from the board, and Russia will no longer have a turn. The Central Powers may no longer attack Russian units or move units into territories controlled by Russia. Central Powers forces can move into or out of territories contested between them and Russia at any time. Russian units will not participate in any battles occurring in such territories. Rules restricting land unit movement out of contested territories (see page 15) no longer apply to Russian territories; however, the Central Powers must maintain at least one infantry unit in each such territory at all times. Central Powers continue to collect income for any Russian territories they control, but they do not collect income from contested territories.

If this optional rule is used, one Allied player should control both Russia and the United States.

ORDER OF PLAY

Axis & Allies: 1914 is played in rounds. During a round, each power takes a turn, in order.

1. Austria/Hungary
2. Russian Empire
3. Germany
4. France
5. British Empire
6. Ottoman Empire
7. Italy
8. United States

Your power’s turn consists of five phases, which take place in a fixed sequence. You must collect income if you can, but all other parts of the turn sequence are voluntary. When you finish your Collect Income phase, your turn is over. Play then passes to the next power in the turn order.

When every power has completed one turn, the round ends. If no side has won, a new round begins.

Turn Sequence

1. Purchase and repair units
2. Movement
3. Conduct combat
4. Mobilize new units
5. Collect income



ORDER OF PLAY (continued)

Phase 1: Purchase and Repair Units

In this phase, you can spend IPCs to purchase additional units for use in future turns. You can also repair damaged battleships.

Purchase Units Sequence

1. Order units and repair battleships
2. Pay for units
3. Place new units in Mobilization Zone

Step 1: Order Units and Repair Battleships

You can purchase as many units of any type as you can afford, but you must choose all the units you wish to purchase during this phase. Tanks may not be purchased before the fourth round of play. You don't have to spend all of your IPCs.

Repair: A battleship, which can take two hits, is laid on its side after the first hit. During this phase, your damaged battleships can be repaired, but only if they are in sea zones that share a naval base symbol with a territory that you control. There is no cost to repair damaged battleships.

Step 2. Pay for Units

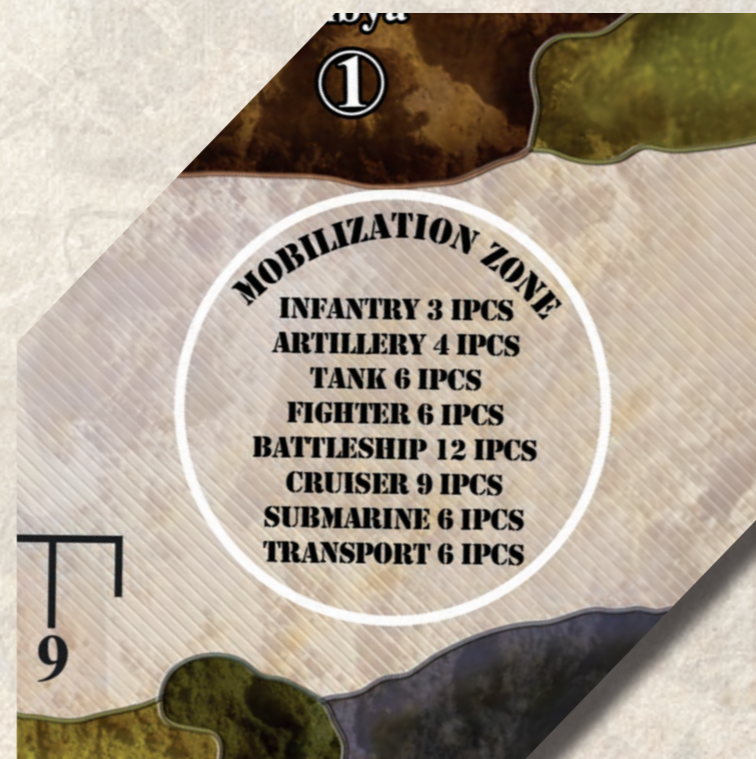
Pay IPCs to the bank equal to the total cost of the units purchased (have the banker adjust the number of IPCs in your power's treasury).

Unit Cost:

Infantry:	3 IPCs each
Artillery:	4 IPCs each
Tank:	6 IPCs each
Fighter:	6 IPCs each
Battleship:	12 IPCs each
Cruiser:	9 IPCs each
Submarine:	6 IPCs each
Transport:	6 IPCs each

Step 3: Place Units in Mobilization Zone

Place your newly purchased units in the Mobilization Zone on the game board. You cannot use these units right away. You will deploy them later in the turn (in the Mobilize New Units phase).



ORDER OF PLAY (continued)

Phase 2: Movement

The **Axis & Allies: 1914** game has one movement phase. In this phase, you can move any or all of your units. All movements must be concluded during this phase, with the exception of amphibious movement of land units and fighters (see "Amphibious Assault and Reinforcement Movement", page 17). After all movements are completed, minor aligned or neutral powers are mobilized, if necessary.

Land Units



All land units (infantry, artillery, and tanks) can move to an adjacent territory. They cannot enter sea zones, unless being transported by transport ships (see "Sea Units", page 16). Land units can move into friendly or contested territories to reinforce them, or they may move into hostile territories to attack them.

If you move units into a hostile territory that contains enemy units, that territory becomes contested. When a territory is contested, it generates no IPC income. The controlling player immediately removes their control marker from the territory and reduces their income on the National Production Chart by the IPC value of the territory.

Land units that begin the turn in contested territories can only be moved to territories that are controlled by your power, or to territories that are also contested and already contain units belonging to your power. If they are moved by transport, they may also remain at sea.

An army in a territory must contain at least one infantry unit. If you move units into a territory, you must move at least one infantry unit in if you don't already have one there. If you leave units behind, at least one of them must be an infantry, or another infantry must move in. To put it another way, at the end of this phase you must have at least one infantry unit in each territory in which you have land units and/or fighters. Infantry belonging to a friendly power in the same territory do not fulfill this requirement.

If you move all of your units out of a territory you control, you still retain control of that territory until an enemy moves into and captures it.

If you move all of your units out of a contested territory and leave only units from the other side there, the other side will immediately claim the territory (see "Taking Control of a Territory", page 20). If the territory was originally controlled by a power on the other side, that power will take control (even if it has no units present). Otherwise, if there are units belonging to only one enemy power in the territory, that power will take control, but if there are units belonging to more than one enemy power, they must decide between them who will take control of the territory (if they can't decide, you decide).

Fighters

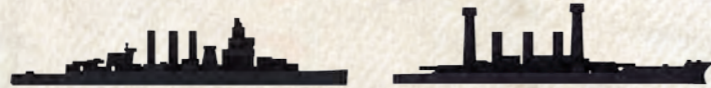


Fighters can move up to two spaces. When moving two spaces, it doesn't matter what the status of the first space is. It can be a sea zone, a friendly or contested territory, or even a hostile territory. However, a fighter must end its move in a territory containing land units belonging to your power.



ORDER OF PLAY (continued)

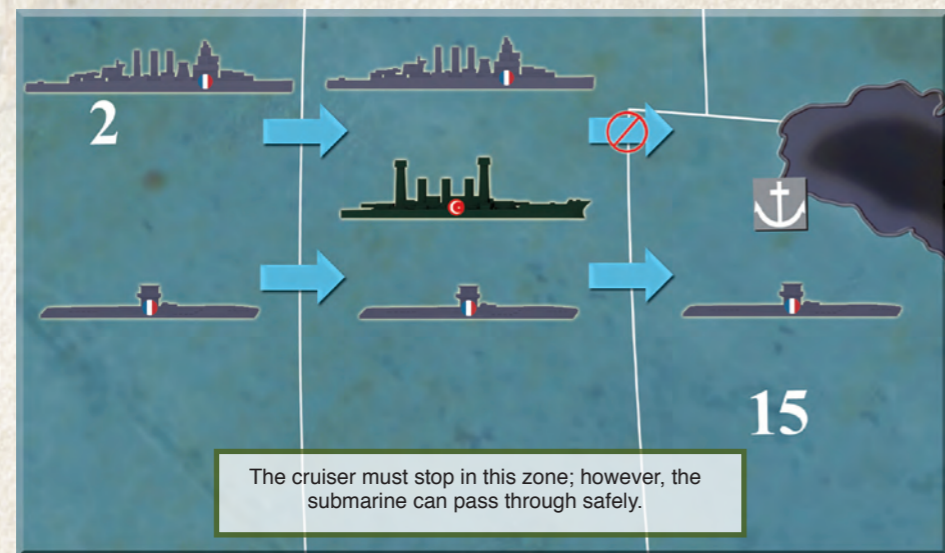
Sea Units



Sea units can move up to two sea zones, except for cruisers, which can move up to three. However, most sea units must end their movement when they encounter a hostile sea zone **after** they begin to move (not counting the sea zone they started in). Sea units can never enter territories.

Enemy submarines and/or transports don't make a sea zone hostile, so they do not block any of your units' movement, nor do they prevent your transports from loading or offloading in that sea zone. As the moving player, you have the option of attacking an enemy submarine and/or transport that shares a sea zone with you. However, if a warship makes such an attack, even against an unescorted transport, that warship must end its movement in that sea zone.

It is possible for some of your units to stop in a sea zone and attack while others continue moving through the sea zone, assuming that conditions there don't require them to stop.



Submarines: Submarines are capable of moving undetected due to their ability to submerge and thus have special movement rules. A submarine can move through a hostile sea zone without stopping.

Transports: A transport may not move into a hostile sea zone without being accompanied by at least one warship belonging to the same power. This escorting warship may move into the sea zone at the same time as the transport or already be in the same zone.

A transport can carry land units and/or fighters belonging to your power or to friendly powers. A transport's cargo capacity is any two land units and/or fighters. These units must use their entire move to load onto and/or offload from a transport – they may not move before loading or after offloading. A transport can load land units and/or fighters from an adjacent territory while in any friendly sea zone along its route, including the sea zone it started in. It can load units in more than one sea zone as it moves. Place the loaded units alongside the transport in the sea zone. Any units aboard a transport are considered cargo until they offload. Cargo cannot take part in sea combat and is destroyed if the transport is destroyed.

Your units can offload from your transport in the same turn in which it loaded them (whether or not the transport moves), or the units can remain at sea until a future turn. As with loading, offloading can only be done to an adjacent territory from a friendly sea zone. Once units offload from a transport, the transport may not move any further and no other units may be loaded onto it in that turn. A transport may not offload into more than one territory in the same turn, but it can offload one unit while the other remains on board. A transport may not transfer units directly to another transport.

ORDER OF PLAY (continued)

Units belonging to friendly powers must load on their owner's turn, be carried on your turn, and offload on a later turn of their owner. This is true even if the transport remains in the same sea zone.

A transport can offload units into a hostile territory as part of an amphibious assault or into a contested or friendly territory as part of an amphibious reinforcement (see below). A transport that is part of an amphibious assault or reinforcement must end its movement in a friendly sea zone (or one that could become friendly as a result of sea combat) from which it can conduct the assault or reinforcement. However, a transport cannot ignore enemy submarines to offload units for an amphibious *assault* unless at least one warship belonging to the attacking power is also present in the sea zone at the end of the Movement phase.

Naval Mine Fields

All sea zones that have a naval base symbol are considered to be mined. While the adjacent territory with the naval base symbol is either under the control of its original side or contested, any enemy ship that moves into or through such a sea zone may strike a mine. At the end of this phase, the player controlling the corresponding territory (or the original controller if it's contested) rolls one die for each of your ships that moved into or through each enemy minefield sea zone. Each ship is called out one at a time and one die is rolled. A roll of 1 will mean the removal of the ship, except for undamaged battleships, which instead become damaged.

Amphibious Assault and Reinforcement Movement

An amphibious assault takes place when you attack a hostile coastal territory (a territory bordering a sea zone) from an adjacent sea zone by offloading units from transports into that territory (or make a joint attack with both offloading units and other units from one or more adjacent territories). An amphibious reinforcement takes place when you move units to a contested or friendly coastal territory from an adjacent sea zone by offloading units from transports into that territory. In either case, the sea zone can be friendly or hostile, but if it is hostile, it must be made friendly through sea combat before the amphibious assault or reinforcement can commence.

If the sea zone from which you're launching the assault or reinforcement is already friendly, you simply offload your units into the territory being assaulted or reinforced during this phase. However, if the sea zone is hostile, you will have to make it friendly through sea combat before your units can offload. If the sea zone contains only enemy submarines and/or transports and you wish to attack them rather than ignore them, you must also conduct sea combat before your units can offload.

If there will be a sea combat, you simply declare your intent to offload your transports afterward. Your units remain on the transport(s) for now, and will offload into the declared territory during the Conduct Combat phase (see "Amphibious Assault and Reinforcement Combat", page 21) if the sea combat is successful.

General Movement Rules

Units from the same side can freely share territories, sea zones, and space on transports with one another as long as both powers agree.

All movement is considered to take place at the same time, and must be completed in this phase. Thus, once the Conduct Combat phase has begun, no further movement is possible. The only exception to this is an amphibious assault or reinforcement that is preceded by a sea battle since the transported units must offload after the sea battle is successfully completed.

☆ ————— ☆

Phase 3: Conduct Combat

Combat occurs when your units share the same space with units belonging to one or more opposing powers and you decide to commit your units to an attack. Only enemy units may be attacked. When attacking, all units in the space belonging to your power must attack. You are required to attack only in territories that have become contested this turn due to your movement of units into them. Attacks in territories that were already contested at the beginning of the turn and in sea zones are always optional, even if you have moved units into them this turn.

Only one power can attack while in a sea zone or contested territory, but all enemy forces that may be present in such a territory must defend together (see "Multinational Forces", page 22). Players must always defend with all units in the space if attacked.

During your turn, you can conduct attacks in as many contested territories and sea zones as you wish. Combat in each space

ORDER OF PLAY (continued)

takes place at the same time, but you conduct combat in each contested territory or sea zone separately and completely before conducting combat in the next contested space. Attacks may be resolved in any order that you wish; however, if an amphibious assault or reinforcement (see page 21) involves a sea battle, the sea battle and subsequent land battle, if any, must be resolved one after the other.”

Attacking and defending units in each space are considered to fire at the same time, but for ease of play dice are rolled in sequence: attacker first, then defender. Subject to certain adjustments, the number of hits the attacker scores is the number of units the defender will lose, and the number of hits the defender scores is the number of units the attacker will lose. Casualties are not removed until both sides have rolled.

Land Combat

The battle board is used only for land battles, not for sea battles. How to conduct sea battles will be explained in the Sea Combat section (see page 20).

If you moved any land units into hostile territories that are unoccupied you do not have any actual combat to conduct. Simply skip to step 6 (Conclude Combat) for each of these territories.

Important Concept: The struggle for a contested territory can last for any number of rounds, but each attack only lasts for one round of die rolling (the attacker rolls his or her dice and then the defender rolls his or hers). The casualties are then removed and the attack is over.

Combat Sequence

Depending on the type of units participating in a battle, certain events will occur. Each battle consists of several steps.

1. Place Dice on the Battle Board
2. Determine Air Supremacy
3. Attacking Units Fire
4. Defending Units Fire
5. Remove Casualties
6. Conclude Combat

Step 1. Place Dice on the Battle Board

The battle board is divided into several boxed areas. At the top of the chart (the area marked “Defender”) is where the defender will place the dice he or she will be rolling during the battle. Units are not moved from the map board to the battle board. Dice are used as proxy representatives of the units on the map. This is referred to as “loading the battle board”.

Both players load their sides of the battle board simultaneously. You, as the attacker, count the number of infantry you have and place one die for each of them in the box that reads “Attacking Infantry”. You then place one die for each of your artillery into the box with the image of the artillery piece where it reads “Attacking Artillery” (bottom center), one die for each of your tanks into the box that reads “Attacking Tanks”, and one die for each of your fighters in the box containing the images of the flying aircraft. Finally, if the battle is an amphibious assault (see “Amphibious Assault and Reinforcement Combat”, page 21), you place one die for each bombarding battleship into the box that reads “Battleship Offshore Bombardment”.

Some of your battling infantry and tanks are going to be “promoted” on the battle board. They will be moved to boxes that give them higher combat values. This shift represents the advantages that combined arms provided during the war. For each artillery piece that you have in the “Attacking Artillery” box, one infantry or tank is moved from its original attack box to its “with Artillery Support” box. The Artillery Supported boxes (for infantry and tanks) each have a higher combat number posted (3 in both cases). In this way, when the dice representing these units are rolled you will be looking for a 3 or less rather than a 2 or less.



ORDER OF PLAY (continued)

The defender, following the same procedure, fills up the defending side of the battle board. However, the defender’s units receive no promotions for combined arms, and the defender will never have battleship bombardment.

Step 2. Determine Air Supremacy

If fighters are present on both sides, there must be an air battle to determine who has air supremacy. Each side rolls one die for each of his or her fighters. For each die roll of 2 or less, one enemy fighter is removed (after both players have rolled). Unlike the land battle itself, the air supremacy battle continues until one side has established air supremacy by eliminating all the enemy’s fighters. Additional rounds of fire are conducted until one or both sides have no fighters remaining.

If one side gains air supremacy either by being the only one with any fighters left, or was the only one to have any fighters at all, he or she gains air supremacy. The player with air supremacy immediately promotes all of his or her artillery to the box that reads “Artillery with Air Supremacy Support”. Air supremacy provides your side with a high altitude reconnaissance advantage... a bird’s eye view of the battlefield if you will.

In addition to gaining promoted artillery, the side with air supremacy also gets to roll for their remaining fighter(s) against the enemy’s land units in one of the next two steps.

Step 3. Attacking Units Fire

You, being the attacker, roll all your dice first. The boxes automatically assign combat values. You roll all the dice in each box together, one box at a time, scoring a hit with each die that shows the number on its box or lower. You place each die that scores a hit along the defender’s side of the battle board.

Step 4. Defending Units Fire

The defender, following the same basic system as the attacker, rolls all his or her dice and places any dice that scored a hit on your side of the battle board.

However, attacking (but not defending) tanks have a special ability to absorb hits. You, as the attacker, reduce the number of hits scored against you by the number of tanks you have in the battle (to a minimum of zero). For each tank you have, you remove one die that scored a hit from your side of the battle board.

Step 5. Remove Casualties

Starting with the attacker, the players each remove one unit from the contested territory for each remaining hit scored against them.

Each player can select any unit in their attacking or defending force as a casualty, including fighters. However, at no time can an army not have at least one infantry unit present. In other words, if a player has one infantry, one tank and one artillery unit left and is required to remove two of these three units, the infantry unit cannot be selected as one of the casualties because this would leave him or her with no infantry. Infantry belonging to a friendly power in the same territory do not fulfill this requirement.

Step 6. Conclude Combat

If there is still at least one unit from each side in the territory, it remains contested.

However, if all of the units on one side have been eliminated, the other side takes control of the territory (see “Taking Control of a Territory”, page 20). If you, as the attacking power, still have units remaining, you will claim the territory. If both you and the defender lost all units in the combat, but units owned by a power friendly to you are in the territory, that power will claim the territory. If there are units belonging to more than one friendly power, they must decide between them who will take control of the territory (if they can’t decide, you decide).

In the rare event that no units from any power remain in the territory, the original controller of the territory will assume control. If the territory is a minor aligned power, the power that it is aligned with will assume control. If the territory is a minor neutral power, no power will assume control.



Taking Control of a Territory

If your power takes control of a territory, whether by capturing it in combat or through all enemy units moving out and leaving your units in possession of it, you place your power's control marker on it and adjust your power's national production level. Its national production increases by the IPC value of the captured territory.

LIBERATING A TERRITORY

If you capture a territory that was originally controlled by another power on your side, you "liberate" the territory. Rather than you taking control of it, the original controller regains the territory and adjusts that power's national production level accordingly.

However, if the original controller's capital is in enemy hands at the end of the phase in which you would otherwise have liberated the territory, you capture the territory instead. You adjust your national production level instead of that power's.

CAPTURING AND LIBERATING CAPITALS

If you capture an enemy power's capital (Vienna, Moscow, Berlin, Paris, London, Constantinople, Rome, or Washington, DC), follow the same rules as for capturing a territory above. Add the captured territory's income value to your national production level.

In addition, you collect all unspent IPCs from the treasury of the original controller of the captured capital. For example, if Germany captures Moscow while the Russian player is holding any IPCs, those IPCs are immediately transferred to Germany's player. You collect these IPCs even if your own capital is in enemy hands.

The original controller of the captured capital is still in the game, but cannot collect income from any territories they still control and cannot purchase new units. The player skips all but the Movement and Conduct Combat phases of the turn until that capital is liberated.

If that power or one on its side liberates the capital, other territories that were originally controlled by the newly liberated capital's controller but are currently in the hands of friendly powers also revert control immediately. The original controller can once again collect income, including from territories reverting control to that power.

You do not collect IPCs from the controlling power when you liberate a capital. For example, if the British Empire's player takes Paris from Germany, Germany's player does not surrender any IPCs.

Sea Combat

When you have warships (not transports) in a sea zone containing enemy ships, you can elect to attack them or not attack them. Unlike a land battle, a sea battle can go on for multiple rounds of combat as long as the attacker wants to continue. You, as the attacker, can stop the battle at the end of any combat round.

Sea Unit Combat and Movement Values

Unit	Attack	Defend	Move
BATTLESHIP	4	4	2
CRUISER	3	3	3
SUBMARINE	2	2	2
TRANSPORT	-	-	2

Combat Sequence

Depending on the type of units participating in a battle certain events and number of dice rolls will occur. Each battle round consists of several steps.

1. Attacking Units Fire or Submerge
2. Defending Units Fire or Submerge
3. Remove Casualties
4. Press or Break Off Attack

Step 1. Attacking Units Fire or Submerge

You, being the attacker, roll all your dice first. First, you roll one die for each submarine you have. With this roll, all rolls of 2 or less score a hit. Next, you roll one die for each cruiser you have, hitting on all rolls of 3 or less. Finally, you roll one die for each battleship you have, hitting on all rolls of 4 or less. Transports do not fire. After all dice are rolled, the total number of hits is recorded.

Submarines and Submerging: Whenever a submarine, attacking or defending, has the ability to roll a combat die, it can elect to submerge instead. If it does so, it is placed on its side, indicating that it has used its ability to submerge and is withdrawing from the battle. The submarine, although submerging rather than firing, is still subject to the results of that round's enemy combat die rolls. If they roll a hit the submarine may be chosen as a casualty or must be the casualty if it is the only target. If the submarine survives the die roll and submerges, it is considered to have broken off from the battle and may not fire or be taken as a casualty in any subsequent round of the battle. At the end of the battle it is turned back over and takes on its normal status. A player may choose to submerge all, some, or none of his or her submarines.

Step 2. Defending Units Fire

The defender, following the same system as the attacker, rolls for all his or her units and records any hits that result.

Step 3. Remove Casualties

Starting with the attacker, the players each remove one unit from the sea zone for each hit scored against them.

Each player can select any unit in his attacking or defending force as a casualty, including submarines that elected to submerge this round (but not in prior rounds). However, transports must be chosen last as casualties, after all warships have been sunk or have submerged (but they may be chosen before submarines that have submerged in the current round).

Battleships: Battleships can take two hits. On the first hit, a battleship is placed on its side rather than removed. A second hit will cause it to be removed. A damaged battleship can only be repaired during the Purchase and Repair Units phase of the owning power's turn (see "Phase 1. Purchase and Repair Units", page 14).

Step 4. Press or Break Off Attack

Combat rounds (steps 1–4) continue until either all units on one or both sides have been destroyed or the attacker (never the defender) breaks off the attack. After the battle, all surviving units from both sides remain in the sea zone.



Amphibious Reinforcement



Amphibious Assault and Reinforcement Combat

If you offload units from one or more transports into a territory, you are performing either an amphibious assault or an amphibious reinforcement (see "Amphibious Assault and Reinforcement Movement", page 17). If there is no sea combat, you will have already offloaded your units during the Movement phase and can proceed to the land combat (see below). However, if you declared an amphibious assault or reinforcement in the Move phase and it is necessary or desired to clear the sea zone before your land units can be offloaded, a sea combat must be fought and won before that can occur.

Note: The attacker may normally conduct combats in any order that he or she wishes. However, if there is an amphibious assault or reinforcement that requires a sea combat, you must conduct the sea combat before any land combats in the territories into which the seaborne units may offload, and you must conduct land combats in those territories immediately after all seaborne units have offloaded into each territory. Only one land combat may be conducted in each territory, so all seaborne units must be offloaded into the territory before the combat can be conducted.

Multinational Forces

Units on the same side can share a territory or sea zone, constituting a multinational force. Such forces can defend together, but they cannot attack together. (This does not mean powers can share income; only the power that controls a territory collects income for that territory.)

ATTACKING

A multinational force cannot attack in the same space together, because each power attacks with its own units only on its own turn. In a space where a battle occurs, any units that belong to a power friendly to the attacker (other than cargo on an attacking transport) cannot participate in the battle in any way. Such units cannot be chosen as casualties in the combat. A unit can amphibiously assault or reinforce a coastal territory from a friendly power's transport, but only on the land unit's owner's turn.

DEFENDING

When a space containing a multinational force is attacked, all units in that space defend together. If the defending units belong to powers under the control of different players, those players mutually determine the casualties. If they cannot agree, the attacker chooses.

TRANSPORTING MULTINATIONAL FORCES

Transports belonging to a friendly power can load and offload your land units and/or fighters. This is a three-step process:

- You load your units aboard the friendly transport on your turn.
- The transport's owner moves it (or not) on that power's turn.
- You offload your units on your next turn.

Sea Combat

The sea combat is conducted in the same manner as any other sea combat (see "Sea Combat", page 20). What happens next depends on the outcome of the combat.

If you clear the sea zone of all enemy units except transports and submarines that submerged to withdraw from the combat, you must immediately offload your transported units into the declared territory. You may then conduct land combat if desired (land combat is required in the case of an amphibious assault). However, if after offloading you would not have at least one infantry unit in the territory, you may not offload. Since any battleships you may have in the sea zone have already been involved in combat, they may not support any amphibious assault with offshore bombardment (see below).

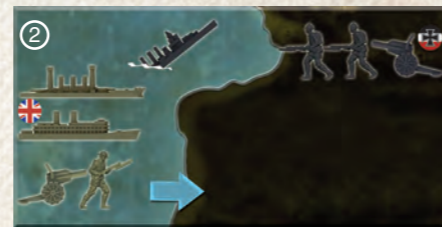
If you fail to clear the sea zone, your units must remain on the transports. In the case of an amphibious assault, any units that moved into the targeted territory from other territories must still attack on their own.

Land Combat - Assault

If you offloaded units from transports into a *hostile* territory (making it contested, and initiating an amphibious assault), you must conduct land combat there. Immediately before the combat is resolved, any defending artillery present in the attacked territory can make a pre-emptive strike against all of your offloading land units and fighters as they come ashore. Any other units attacking the same territory that did not enter it by sea are not affected by this strike. The defender rolls one die for each defending artillery unit, scoring a hit on each roll of 3 or less. You must then immediately remove one unit for each hit scored (attacking tanks do not absorb hits as they are being brought ashore). The last offloading infantry unit may not be selected as a casualty unless either it is the last remaining offloading unit of any kind or you also attacked the territory by land (in which case you will still have infantry in the territory). Surviving attacking units then land in the territory and move on to land combat.

The land combat is conducted in the same manner as any other land combat (see "Land Combat", page 18), with one exception. If there was no sea battle,

Amphibious Assault with Sea Battle



Amphibious Assault without Sea Battle



any battleships that are in the sea zone(s) from which units offloaded from transports can conduct offshore bombardment. However, the number of battleships that can bombard is limited to the number of units that offloaded from transports. If more than one amphibious assault is being conducted from the same sea zone, each battleship may bombard in only one territory.

Land Combat - Reinforcement

If you offloaded units from transports into a *contested* territory (an amphibious reinforcement), you may conduct combat there, but it is not required that you do so. If you do, it is the same as any other land combat (see "Land Combat", page 18). Any defending artillery in the territory cannot make a pre-emptive strike against your offloading units, and any of your battleships that are in the sea zone(s) from which units offloaded from transports cannot conduct offshore bombardment.

Phase 4: Mobilize New Units

Units that you purchased at the beginning of the turn and are presently located on the Mobilization Zone circle on the game board are now put into play. Place all of your new land units and fighters on your power's capital territory. The British Empire player may also place any number of land units and fighters in India, which represent troops from the Pacific British Crown colonies staging in Bombay. If, after mobilizing new units in a territory, that territory doesn't have at least one of your power's infantry units on it, you must return one land unit or fighter of your choice that you mobilized this turn to your storage box and replace it with an infantry unit (you do not receive an IPC refund for the difference in cost).

Place all of your new sea units in any sea zone that shares a naval base symbol with a territory that you originally controlled (has your power's emblem) and is not currently controlled by an enemy power. If there is more than one such sea zone, you may split your new sea units between them in any way that you wish.

New units can enter play even in a contested territory or hostile sea zone. No combat occurs because the Conduct Combat phase is over.

Phase 5: Collect Income

In this phase, you earn production income to finance future attacks and strategies. Look up your power's national production level (indicated by your control marker) on the National Production Chart. This is the amount of IPC income you have generated. Collect that number of IPCs from the bank by having the banker add it to the total number of IPCs in your power's treasury.

If your capital is under an enemy power's control, you can't collect income.

Unrestricted Submarine Warfare

- The German player can declare that he or she will begin unrestricted submarine warfare at any time during the game. Once this is declared, Germany will conduct submarine attacks against both the United States' and the British Empire's shipping routes during their respective Collect Income phases. On each of these powers' turns, the Germany player will roll 1 die for each German submarine in sea zones 2, 7, and/or 8. For each die roll of 1 or 2 the attacked power will deduct 1 IPC from the income it collects during this phase (to a minimum of zero).

☆ ————— ☆

WINNING THE GAME

If the Allies control Berlin and at least one other Central Powers capital at the end of the Ottoman Empire player's turn, they win the war. If the Central Powers control at least two Allied capitals, one of which must be either Paris or London, at the end of the United States player's turn, they win the war.